

FOR BEST RESULTS:

Clean application site with an alcohol wipe and/or *non-moisturizing* soap prior to application.

Contents:

- 1 Alcohol Wipe
- 1 BioPlus+™ Barrier Wipe
- 1 Insertion Site Securement Device

For use on intact skin.

If redness or irritation occurs, stop use and consult a healthcare practitioner.



CathGrip®
Grip&Seal™



See reverse for complete application instructions.



Manufactured by BioDerm®, inc.

12320 73rd Court N, Largo, FL

Orders: (800) 814-3134 Support: (800) 864-6755 Web: www.BioDermInc.com

©2017 BioDerm, Inc. All rights reserved. CathGrip® and BioDerm® are registered trademarks of BioDerm, Inc. Grip&Seal™ and BioPlus+™ are trademarks of BioDerm, Inc. CathGrip U.S. patent pending.

LT 90367 C

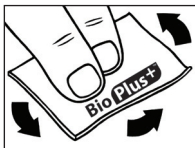
Applying Grip&Seal™



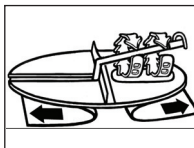
CathGrip®
Grip&Seal™



STEP 1: Clean entire application site with alcohol wipe and allow to dry.



STEP 2: Wipe the entire application site with BioPlus+™. Allow 15+ seconds to dry.



STEP 3: Place the Grip&Seal and remove the release papers. Press to the skin. Rest the tube on the soft no-slip grips.



STEP 4: Wrap the wings around the tube in an "X" shape. Pinch to secure. Pull grips tight to secure the tube.

FOR BEST RESULTS: Clean application site with an alcohol wipe prior to application. Avoid cleaning the application site with liquid soaps or bathing wipes as this may reduce wear time.